

Sixth Stallation of the Icosahedron

(small version)

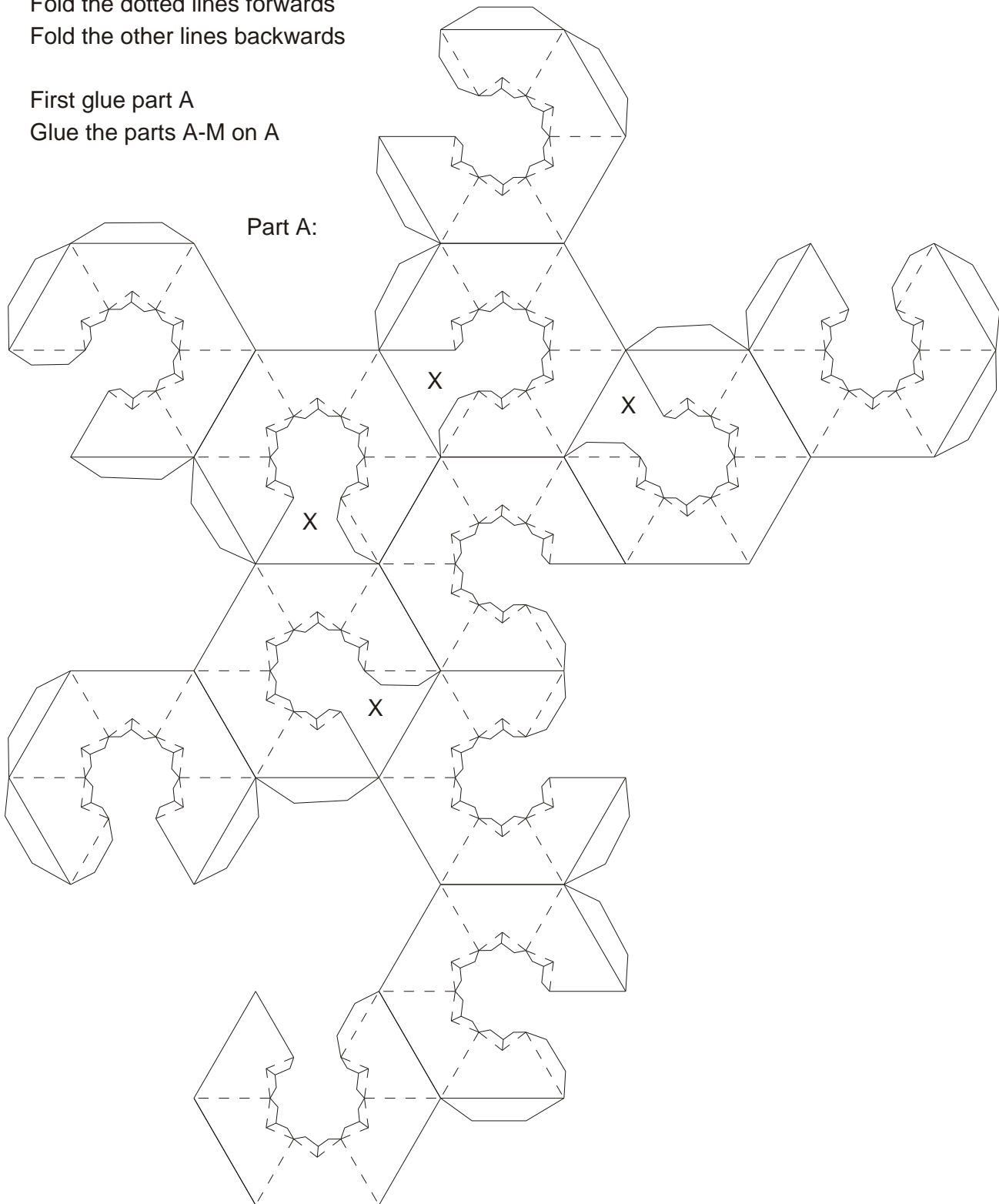
Fold the dotted lines forwards

Fold the other lines backwards

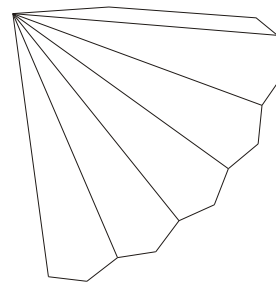
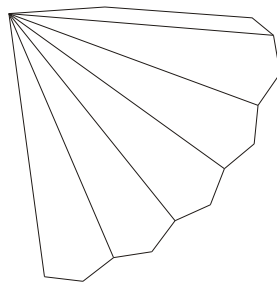
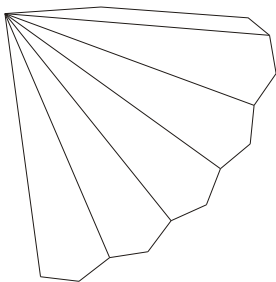
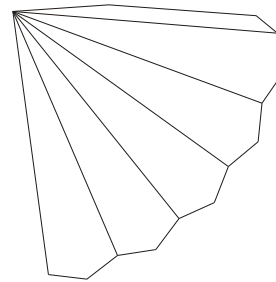
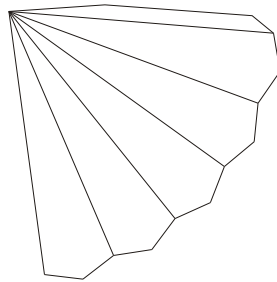
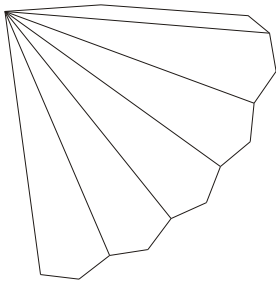
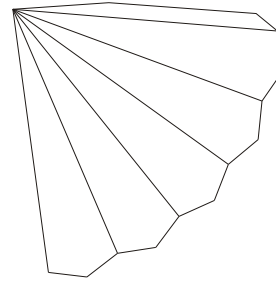
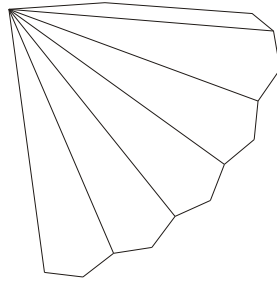
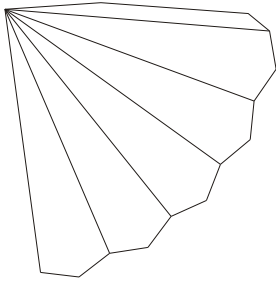
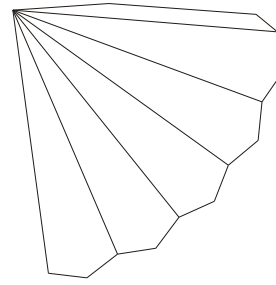
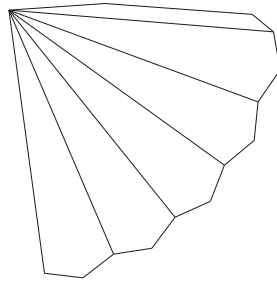
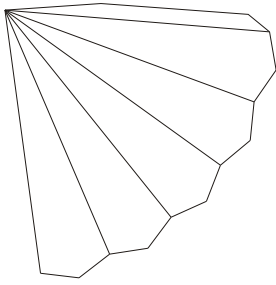
First glue part A

Glue the parts A-M on A

Part A:



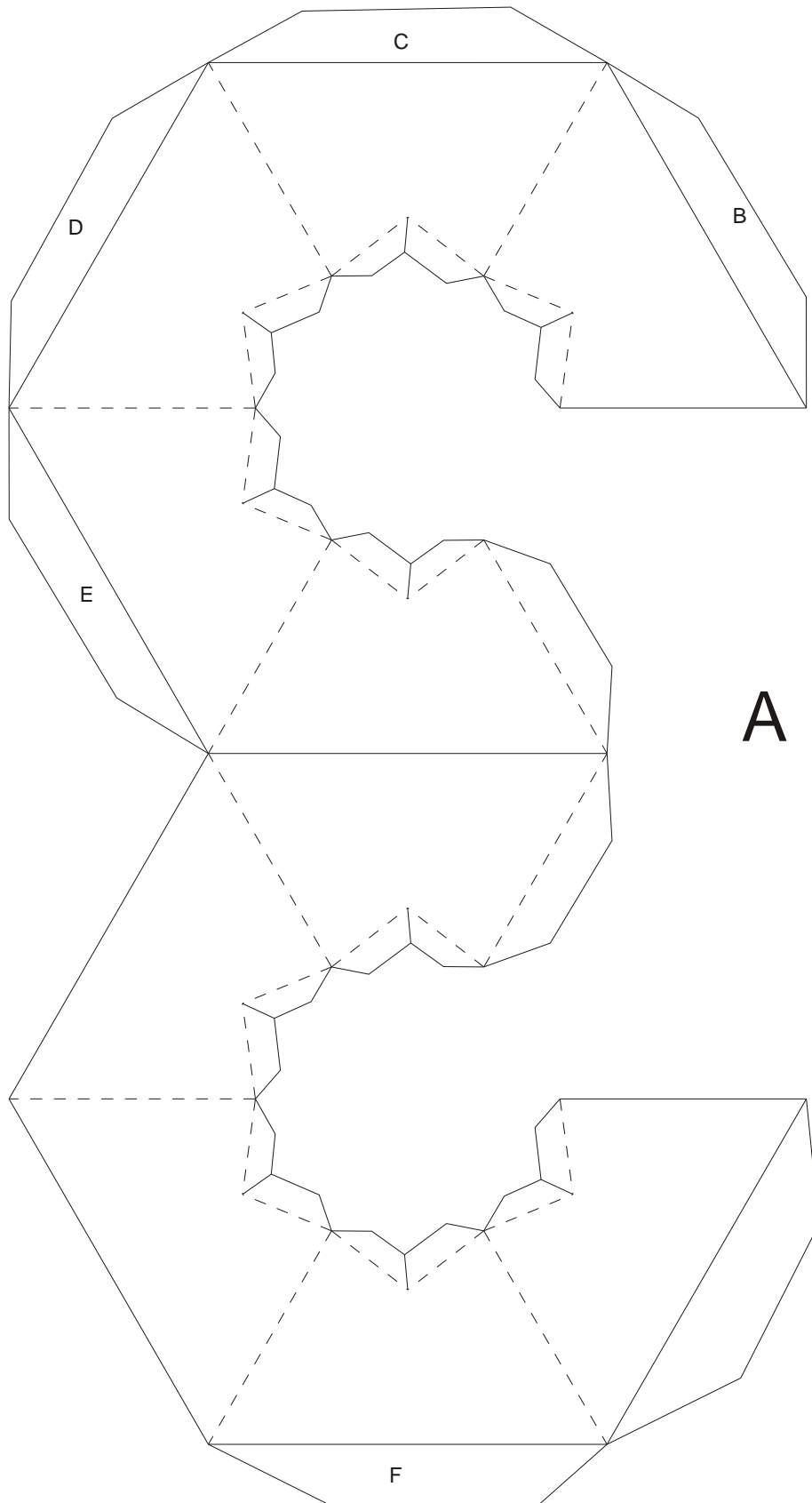
Parts B-M

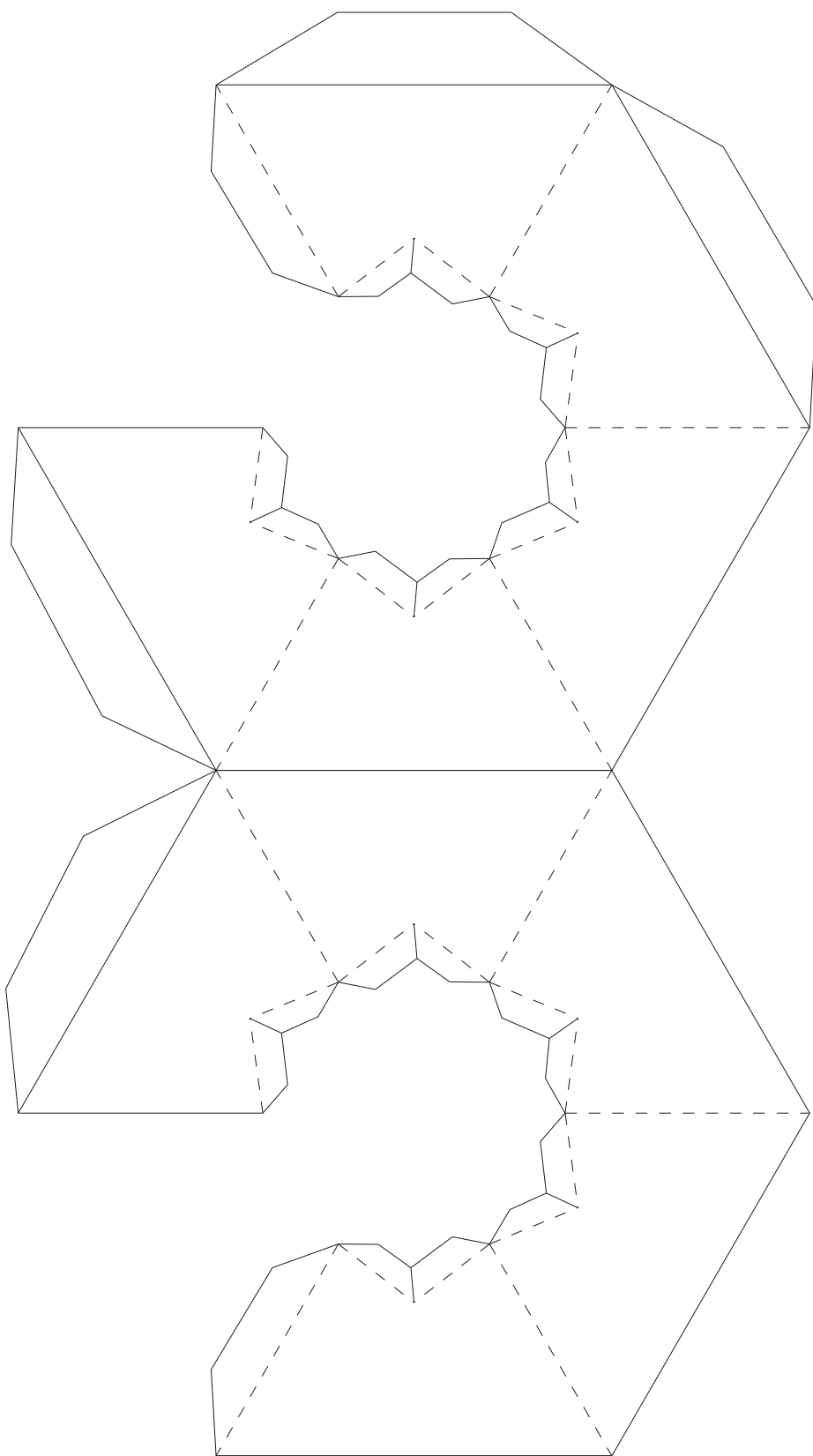


Sixth Stellation of the Icosahedron (large version)

First glue the parts A until F

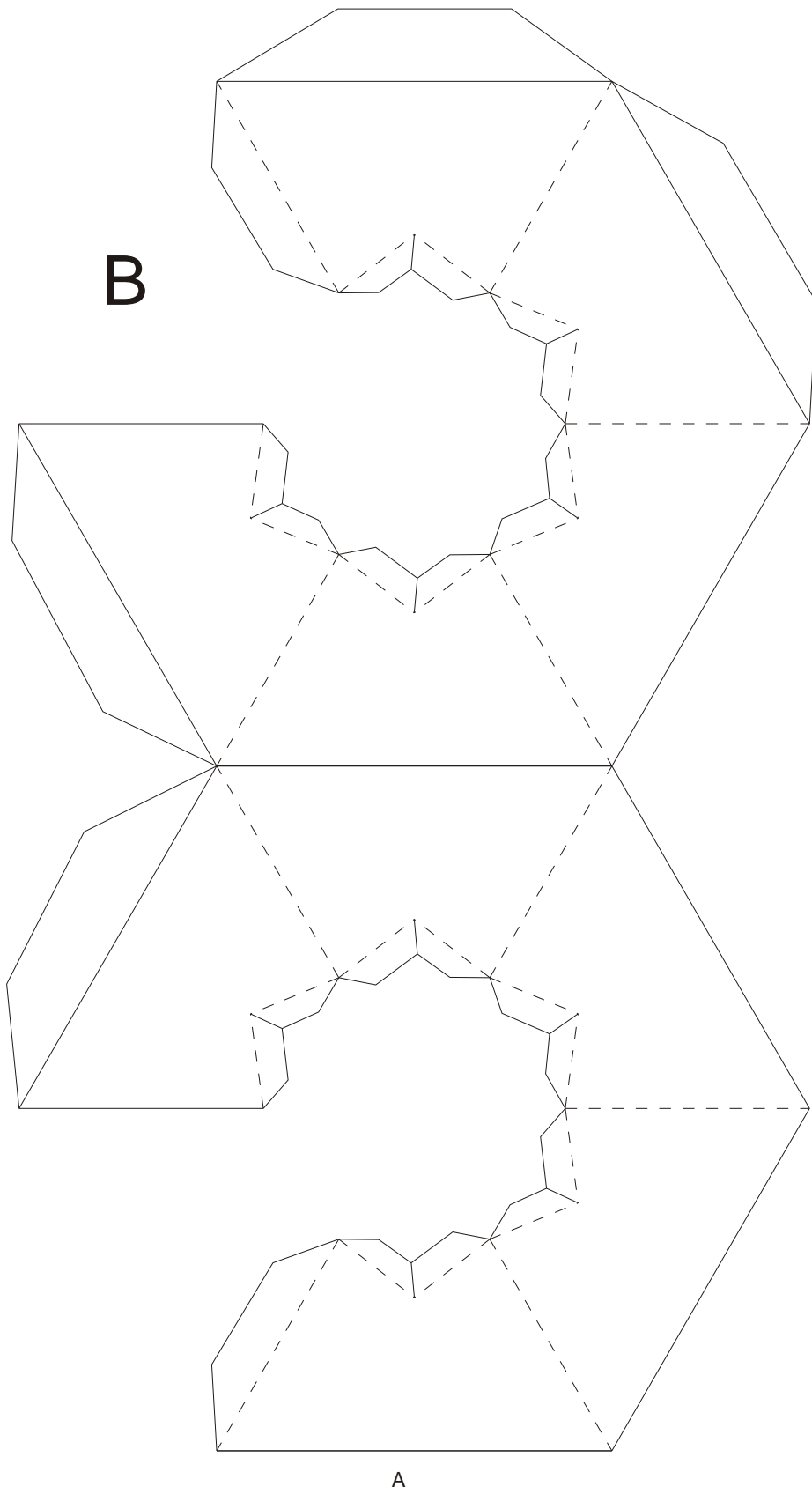
Glue the 12 other parts on the ABCDEF





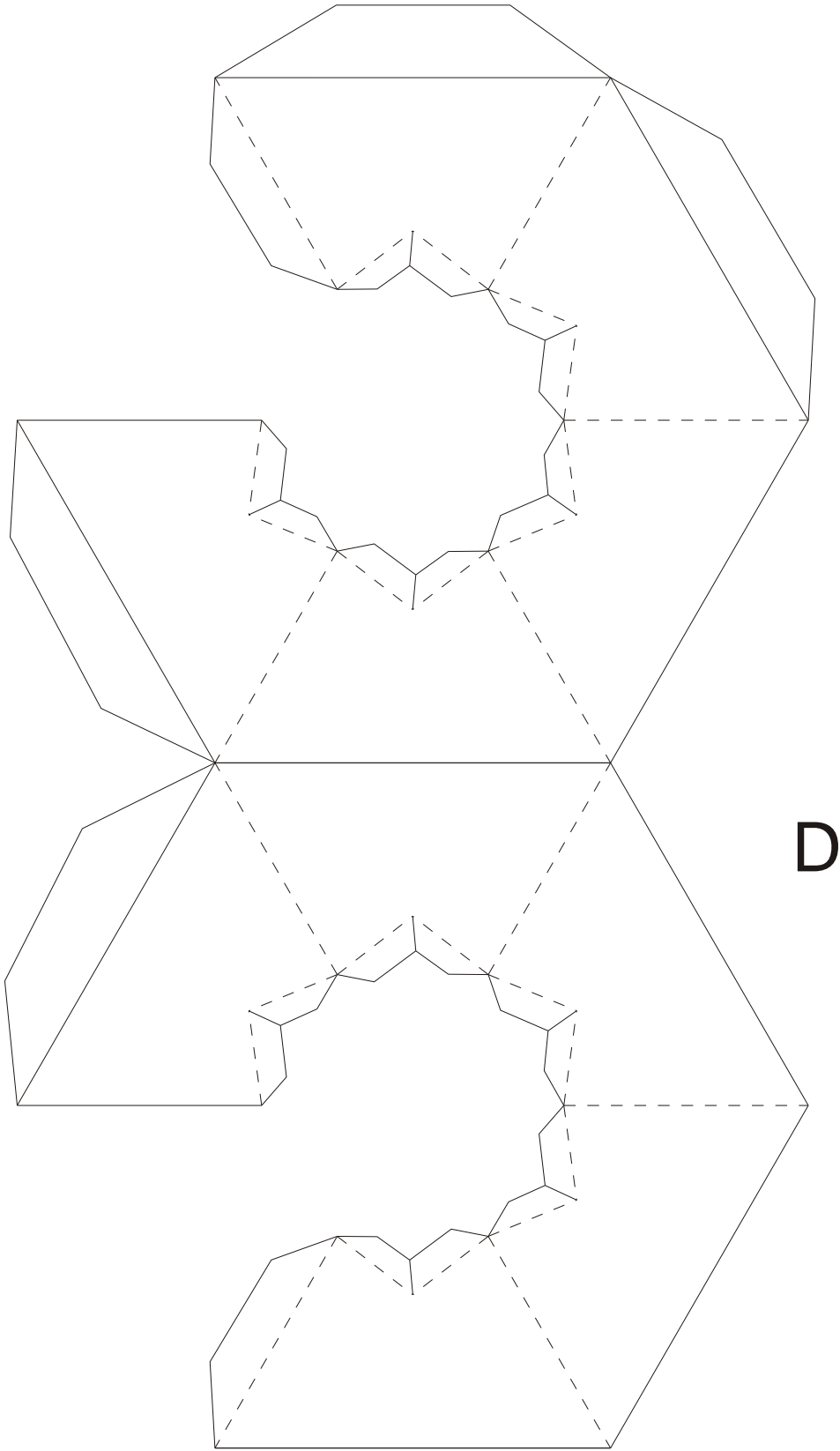
B

A



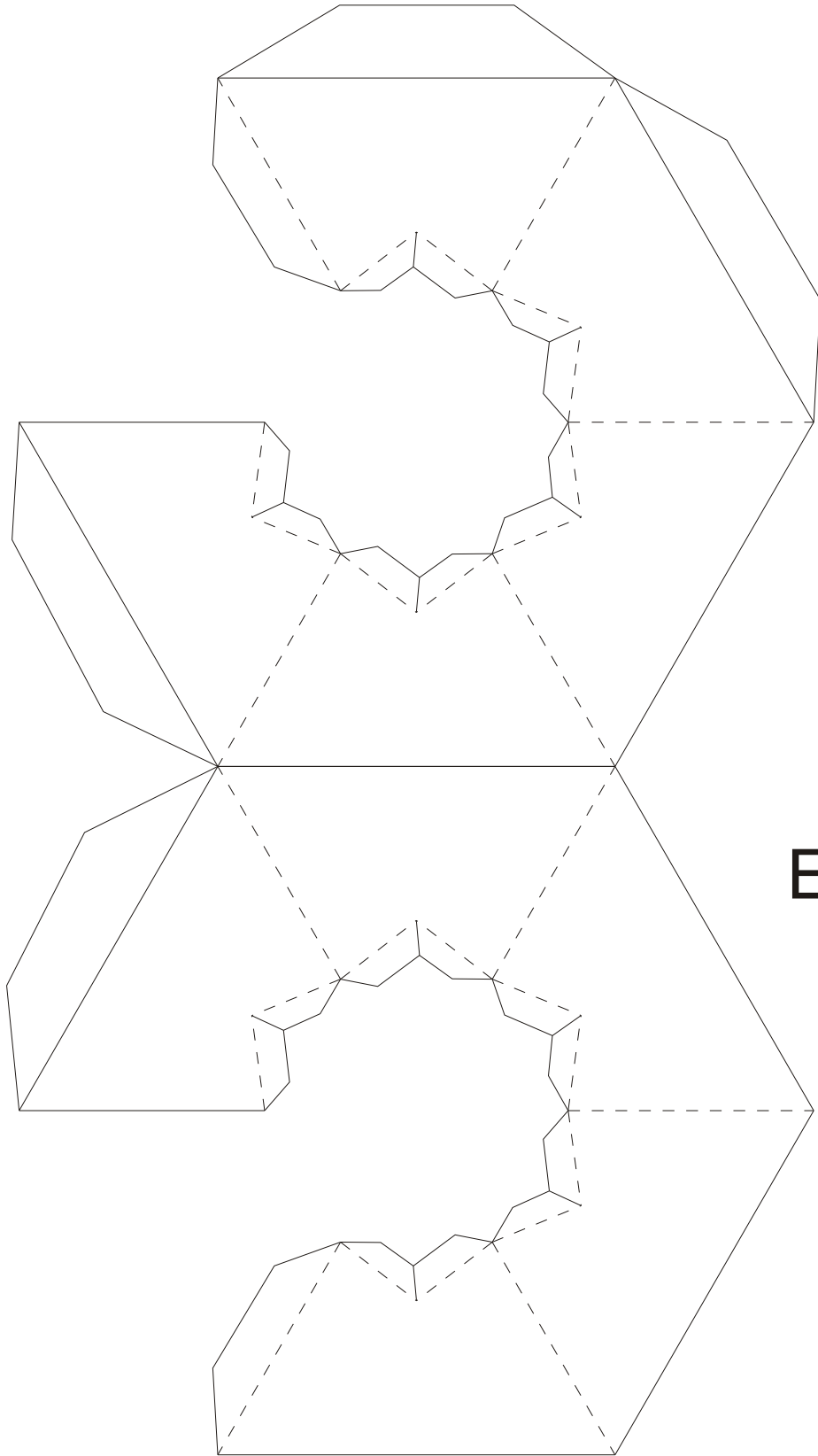
B

A



A

D



E

A

